



Multi-Fuel

Residential

Hand-Fired Updraft Multi-Fuel Boilers



Manufactured
over
30 Years

Alternate Heating Systems

2393 Little Egypt Rd • Harrisonville, PA 17228
(717) 987-0099 • sales@woodgun.com
www.woodgun.com

Coal • Liquid/Gas Fuels

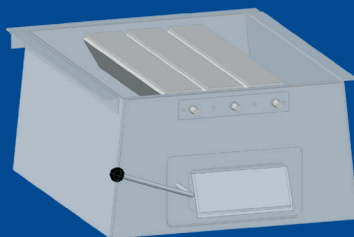


Multi-Fuel

Residential

For the ultimate in fuel burning flexibility, look to the AHS Multi-fuel boiler. Engineered to burn a variety of fuels with high efficiency, our multi-fuel boiler will provide economical heat and hot water for your specific application.

The AHS Multi-Fuel boiler is available in configurations that allow you to burn soft and hard coal or soft and hard coal with liquid or gas fuel backup. Coal configurations are optimized for burning anthracite coal but a special package is available to enable the burning of more common bituminous coal. The secret to burning two different fuels in the same firebox is our Rolla-Grate rotary grate system (see below). Liquid fuel backup enabled models include a separate firing chamber where fuel oil, natural gas, or propane is combusted.



The Rolla-Grate triangular rotary grate system is the secret to the flexibility of the AHS multi-fuel boiler. This remarkable system adjusts from a flat, nearly solid platform for burning hard coal to a base with large air flow openings for burning soft coal. In addition, The Rolla-Grate system provides a convenient method of removing ash.

Standard Equipment

- **Rolla-Grate™ ROTARY GRATE SYSTEM**
Opening can be increased from nearly closed to large opening for burning coal. Includes large, removable ash pan.
- **LARGE LOADING DOOR**
Full gasket for maximum efficiency
- **DUAL DRAFT SYSTEM**
- **AUTOMATIC DRAFT CONTROL.**
- **FIREBRICK LINED FIREBOX**
- **HYDRO TESTED TO 60 LBS. PSI**
- **CONSTRUCTED OF 1/4" STEEL PLATE THROUGHOUT**
- **HONEYWELL CIRCULATOR CONTROL AQUASTAT**
- **TEMPERATURE/PRESSURE GAUGE**
- **ASME TESTED PRESSURE RELIEF VALVE**
- **LOAD DOOR SMOKE FLAP**
- **COAL FORCED DRAFT KIT**
- **WATER COOLED BAFFLES**
Increase heat exchange surface for burning coal.





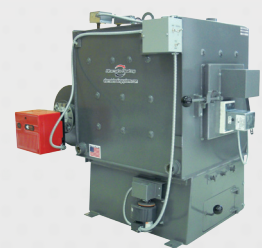
C100



C40



CO55



CO40

Multi-Fuel Boiler Nomenclature:

The following letters are used in designating boiler fuel configurations and have the following meanings. Note that the letters may be used in combination to designate the options included on a particular boiler configuration.

C - Coal burning • **O** - Oil/Liquid fuel burning

Models designated with an "O" for oil/liquid fuel burning are capable of burning a variety of liquid fuels. Typical fuels are fuel oil, natural gas, and propane. Models designated with a "C" for coal burning are provided in standard configuration for anthracite coal but are available with an optimization package for burning bituminous coal.

AHS Multi-Fuel boilers are currently manufactured in four standard sizes. All units are traditional, hand-fired, updraft boilers. For automatic feeding boilers, please explore our Wood Gun wood gasification product line or our Coal Gun automatic coal stoker product line.

Multi-Fuel Boiler Specifications

With oil backup	CO40	CO55	CO70	CO100
Coal	150,000	225,000	265,000	400,000
Oil (max)	225,000	225,000	250,000	400,000
Heating Surface	24 sq ft	32 sq ft	39 sq ft	56 sq ft
Water Capacity	44 gallons	59 gallons	75 gallons	100 gallons
Fire Box Capacity	7.5 cu ft	10 cu ft	14 cu ft	22 cu ft
Coal Capacity	125 lbs.	200 lbs.	250 lbs.	400 lbs.
Door Opening	14" x 14"	14" x 14"	14" x 14"	16" x 16"
Flue Size	8"	8"	8"	8"
Weight	1,230 lbs	1,400 lbs	1,630 lbs	2,130 lbs.

Without oil backup	C40	C55	C70	C100
Coal	150,000	225,000	265,000	400,000
Heating Surface	20 sq ft	27 sq ft	33 sq ft	50 sq ft
Water Capacity	40 gallons	55 gallons	70 gallons	95 gallons
Fire Box Capacity	7.5 cu ft	10 cu ft	14 cu ft	22 cu ft
Coal Capacity	125 lbs.	200 lbs.	250 lbs.	400 lbs.
Door Opening	14" x 14"	14" x 14"	14" x 14"	16" x 16"
Flue Size	8"	8"	8"	8"
Weight	1,050 lbs	1,220 lbs	1,450 lbs	1,950 lbs.

Specifications subject to change without notice.



Optional Multi-Fuel Equipment

- Domestic hot water coil(s).
- Low water cutoff - safety shutdown if water level drops.
- Liquid fuel burning package.
- Automatic switchover package - automatically switch to liquid fuel backup when fire goes out.
- Bituminous coal burning package - enables you to more efficiently burn bituminous coal.



Auto Switch Over Optional
on CO models

Standard Multi-Fuel Equipment

See inside for complete list of standard features



Rolla-Grate™ and Fire Brick
Standard



Load Door Smoke Flap
Standard



Forced Draft for Burning Coal
Standard



Firebox Watertubes
Standard

Limited Warranty

Alternate Heating Systems, Inc. boilers and furnaces are warranted against defects in materials and workmanship for the following periods:

- Boiler Vessel and Grate - 5 years
- All other components both manufactured by Alternate Heating Systems, Inc. and purchased from vendors will vary in length of warranty from 30 days to 1 year

A copy of the complete warranty text, detailing coverage, limitations, warranty claim procedure and state law rights is available from Alternate Heating Systems, Inc.



Alternate Heating Systems manufactures alternative fuel burning heating equipment and sells (primarily direct) throughout the US, Canada, and internationally. Call us today to schedule a tour of our facilities, visit our showroom, and see a working demonstration of any boiler models.

Alternate Heating Systems

2393 Little Egypt Rd

Harrisonville, PA 17228

Time is the best friend of Truth.